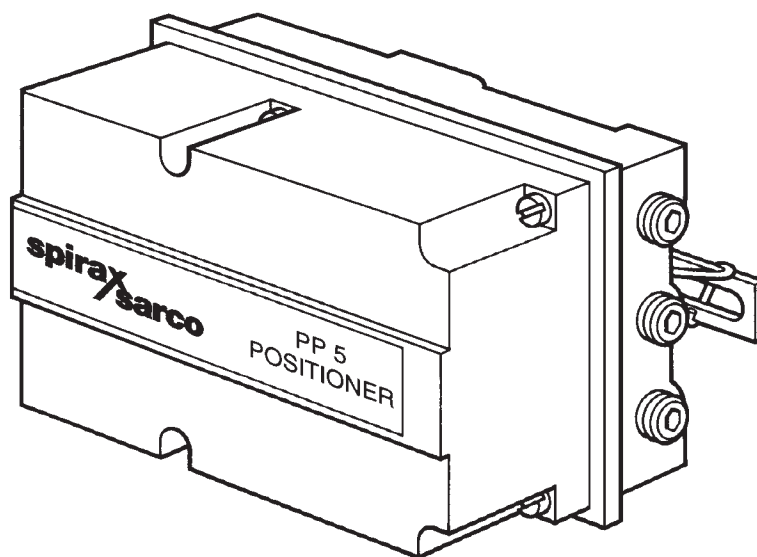


# spirax/sarco

## PP5 Pneumatic Positioner



### Description

The PP5 positioner is a single acting unit, requiring a 3 - 15 psi signal and is for use with linear pneumatic actuators. The positioner compares the output signal from a pneumatic controller (or transducer) with the valve position feedback, and varies the pneumatic output signal to the actuator accordingly. The valve position is; therefore, guaranteed for any controller output signal and the effects of varying valve differential pressure, stem friction and diaphragm hysteresis are overcome. The positioners can also be used where the controller output signals are of too low a magnitude to be used directly with high pressure actuators. A mounting kit is supplied with each positioner for mounting either to columns or yoke in accordance with IEC 60534-6-1 Standard.

The positioners can be used with the following actuators:  
PN1000/2000, 3000/4000, 9000 Series.

### Technical Data

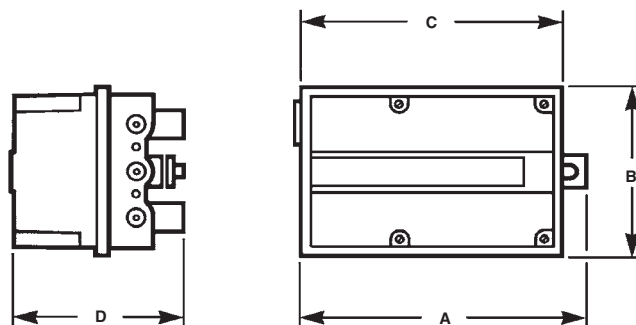
Input signal range	3 - 15 psi (0.2 to 1 bar)
Output signal range	0 to 100% supply air pressure
Supply air pressure	20 to 90 psig (1.4 to 6 barg)
Stroke range	.4 to 4" (10 to 100mm)
Amplification	Adjustable
Hysteresis	Less than 0.5%
Enclosure rating	IP54
Steady State Air consumption	13.06 ft <sup>3</sup> /h at 90 psi (0.7m <sup>3</sup> /hr at 6 bar)
Pneumatic connections	1/4" NPT
Ambient conditions	-4° F to 250° F (-20 to 80°C)

### How To Specify

1- PP5 pneumatic positioner

### Dimensions (nominal) in inches and millimeters

A	B	C	D	Weight
7.0	4.3	6.5	4.3	5.5 lb
175	110	165	110	2.8 kg



### Materials

Base plate and cover

Die cast aluminum with  
anti corrosive paint

Local regulation may restrict the use of this product below the conditions quoted. Limiting conditions refer to standard connections only.  
In the interests of development and improvement of the product, we reserve the right to change the specification.

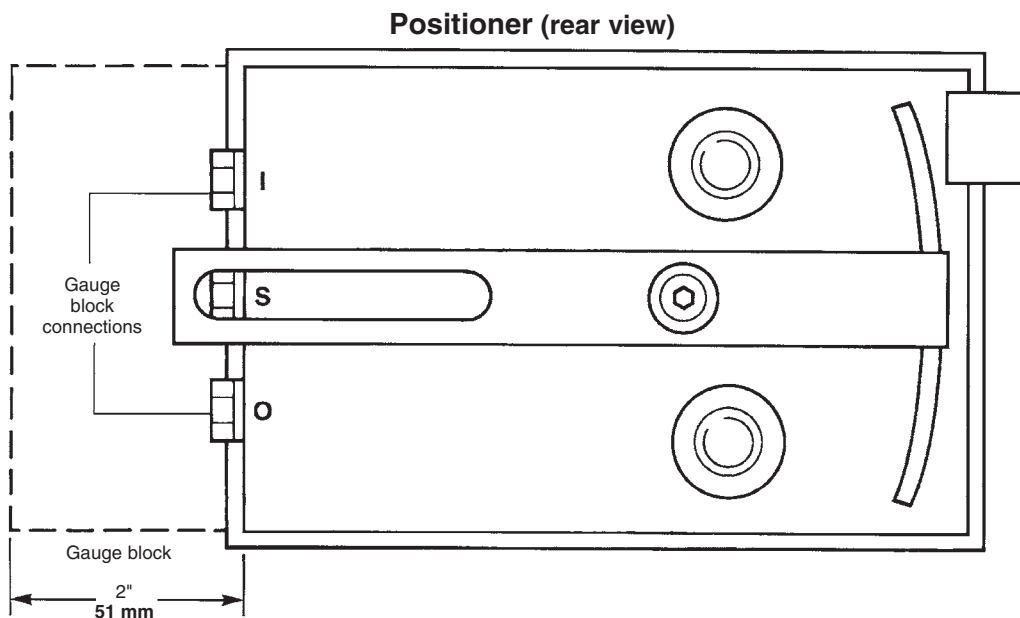
# PP5 Pneumatic Positioner

## Installation

Full details are contained in the appropriate Installation & Maintenance Instructions supplied with the product.

## Air Connections (rear view)

Air Connections 1/4" NPT



## Spares

Gauge	0-30 psi output
Gauge	0-60 psi output
Gauge	0-100 psi output
Springs and pneumatic tube set	
Set of gaskets, diaphragms and orifice	
Amplifying relay set	
Block for gauges	

